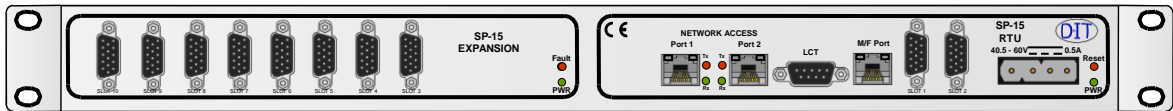


Security Monitoring Modules For RTUs



- 8 x Digital Alarm Input Monitoring for PIR/Motion Sensors
- 4 x Relay Output Controls to drive associated devices eg Sounder
- Sensors powered (12V dc) from the PIM
- RTU Network Access via Ethernet, Serial or Modem Ports
- Local or Remotely Manageable
- Managed by D&ITs NMS PC-Gx

Data and Information Technology's range of Remote Terminal Units (RTUs) provide network monitoring and control capabilities quickly and efficiently without the need for custom programming.

An example RTU is the SP-15 as shown above which support up to 10 x Plug-In Modules (PIMs)

Please refer to separate datasheet for details of these individual RTUs summarised below:

- SP-15 RTU (serial networking)
- SP-25 RTU (dial up networking)
- SP-35 RTU (modem & Ethernet networking)
- SP-85 (MNDC Poller) - Ethernet networking

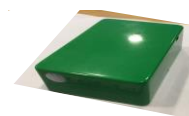
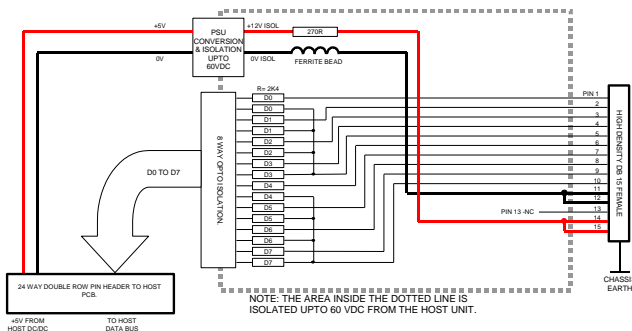
Plug-In Module Product Applications

Non-Polarity-Sensitive Input PIM (9050-0470A)

Connector	15-way high-density 'D' connector
Number of Inputs	8 in two groups of 4 (may be voltage or volt-free contact) – Optically Isolated
Input Rating	May be voltage or volt-free contact – for voltage contacts, the operating range is 4.5V DC – 60V DC
Interlocking	Pin 13 blocked
Isolation	Isolated up to 60V DC from host PCB
Input Bias	12V isolated supply, presented on 2 pins
Power Consptn	0.65Watts (all inputs on, typical)

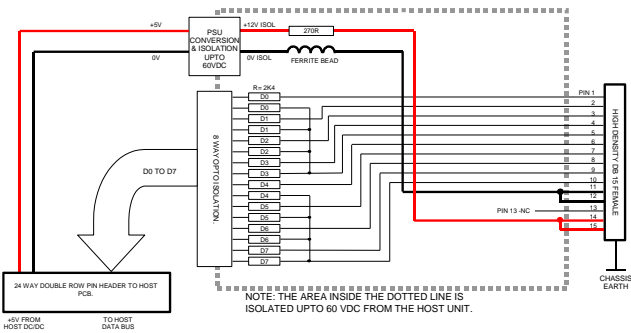
Sensor (PIR/Motion)

Housing	Plastic or stainless steel tube (see pics)
Dimensions	Indoor: 65 x 45 x 25 mm Outdoor: sealed 25 mm diameter x 120 mm tube
Cable	Max 10m – Pre-terminated with waterproof connection on sensor with flying leads for external termination
Adjustability	Sensitivity & Delay – Potentiometer controlled - Triggered on movement and/or temperature change (pre-settable).
Sensor Type	PaPIRs, 6m, 60 deg angle (adjustable)
Sensor Features	up to 10s detection wait time Sensor Presence check (self checking) Electrical interface Compatible with RTU 0470A_2, device powered from the PIM
Input PIM 9050-	Input 5v loop normally set
Operating Conds	Indoor and Outdoor (Weatherproofed)
Temp range	Outdoor -25 to 50 deg C Indoor 0 to 30 deg C
Weight	300 gm



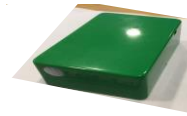
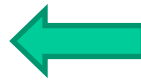
Non-Polarity-Sensitive Input PIM (9050-0470A)

Connector	15-way high-density 'D' connector
Number of Inputs	8 in two groups of 4 (may be voltage or volt-free contact) – Optically Isolated
Input Rating	May be voltage or volt-free contact – for voltage contacts, the operating range is 4.5V DC – 60V DC
Interlocking	Pin 13 blocked
Isolation	Isolated up to 60V DC from host PCB
Input Bias	12V isolated supply, presented on 2 pins
Power Conspn	0.65Watts (all inputs on, typical)



Sensor (Tamper)

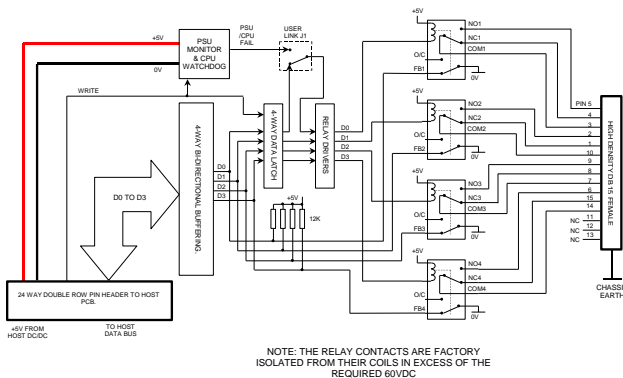
Housing	Plastic
Dimensions	65 x 45 x 25 mm
Cable	Max 10m – Pre-terminated with hermetically sealed connection cable at sensor with flying leads for external termination
Sensor Type	MMA8451Q,
Features	3 chan motion detection primarily focusing upon Jolt and Shake acceleration detection in the X, Y, Z planes. 2 potentiometer controls
Electrical interface	Compatible with RTU Input PIM 9050-0470A_2, device powered from the PIM Input 5V loop normally set
Temp range	-25 to 50 deg C
Weight	300 gm



Relay Output PIM, Fail-Safe (9050-0509A_C)

The module is compatible with the mechanical features of the existing standard relay module.

Connector	15-way high-density 'D' connector (female)
Interlocking	Pin 12 blocked
Number of Outputs	4 off, change-over contacts
Contact Rating	30VA (1A @ 30V DC, 0.5A @ 120 V AC non-reactive load)
Maximum switched voltage	60V DC, 42.4V AC
Isolation	Isolated up to 60V DC from host PCB
Power Conspn	1.0W (all relays energised, typical)



Sounder EV21 Voice

Housing	Aluminium (Light Grey)
Cables	10m power cable 12m control cable (Closed contact working)
Ingress Protection	IP54 according to IEC 60529
Operating Voltage	48v DC
Current	0.12 A Max
Operating Conds	Indoor and Outdoor
Volume	Max. 105 dB(A) at 1m (pot contl)
Loudspeaker	Dynamic pressure chamber loudspeaker, impact-resistant ABS plastic, permanently mounted to the housing
Memory	Micro SD Card, Min 4 GB
Sound file format	> 80 pre-installed tones: Configurable sound compositions; WAV format, uncompressed sample data (PCM) Mono/Stereo < 16 bit, 2400-50400 samples per sec
Temp range	-25 to 60 deg C
Weight	Approx 1.5 kg

